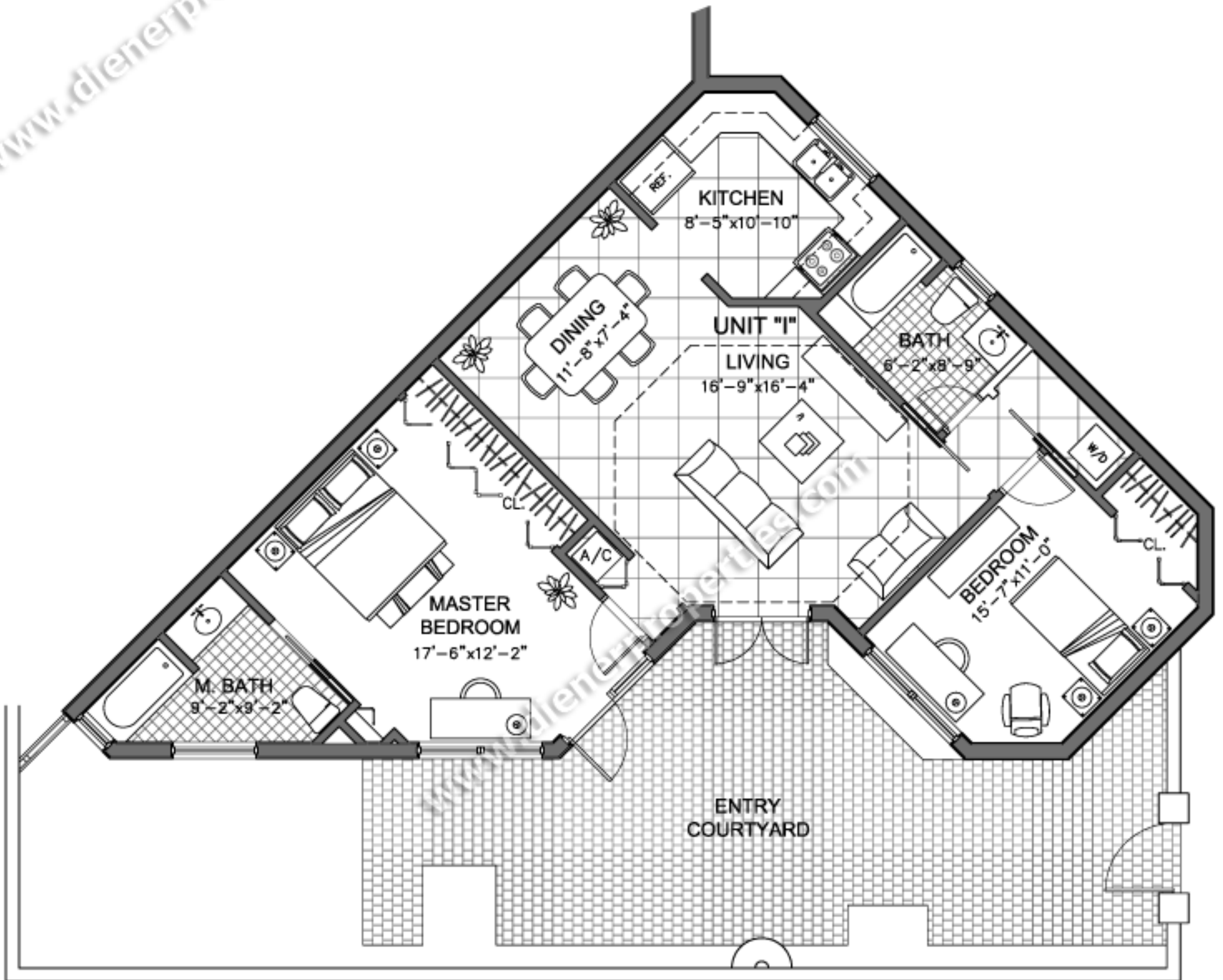


# PEARLS IN THE GROVE CONDOMINIUM



## UNIT "I" FLOOR PLAN



### DISCLAIMER:

The residence's dimensions indicated above are approximate and may vary. Broker cooperation welcomed, oral representation cannot be relied upon as correctly stating representation of the developer. For correct representations, make reference to this presentation and to documents required by section 718.503, Florida statutes, to be furnished by the developer to a buyer.