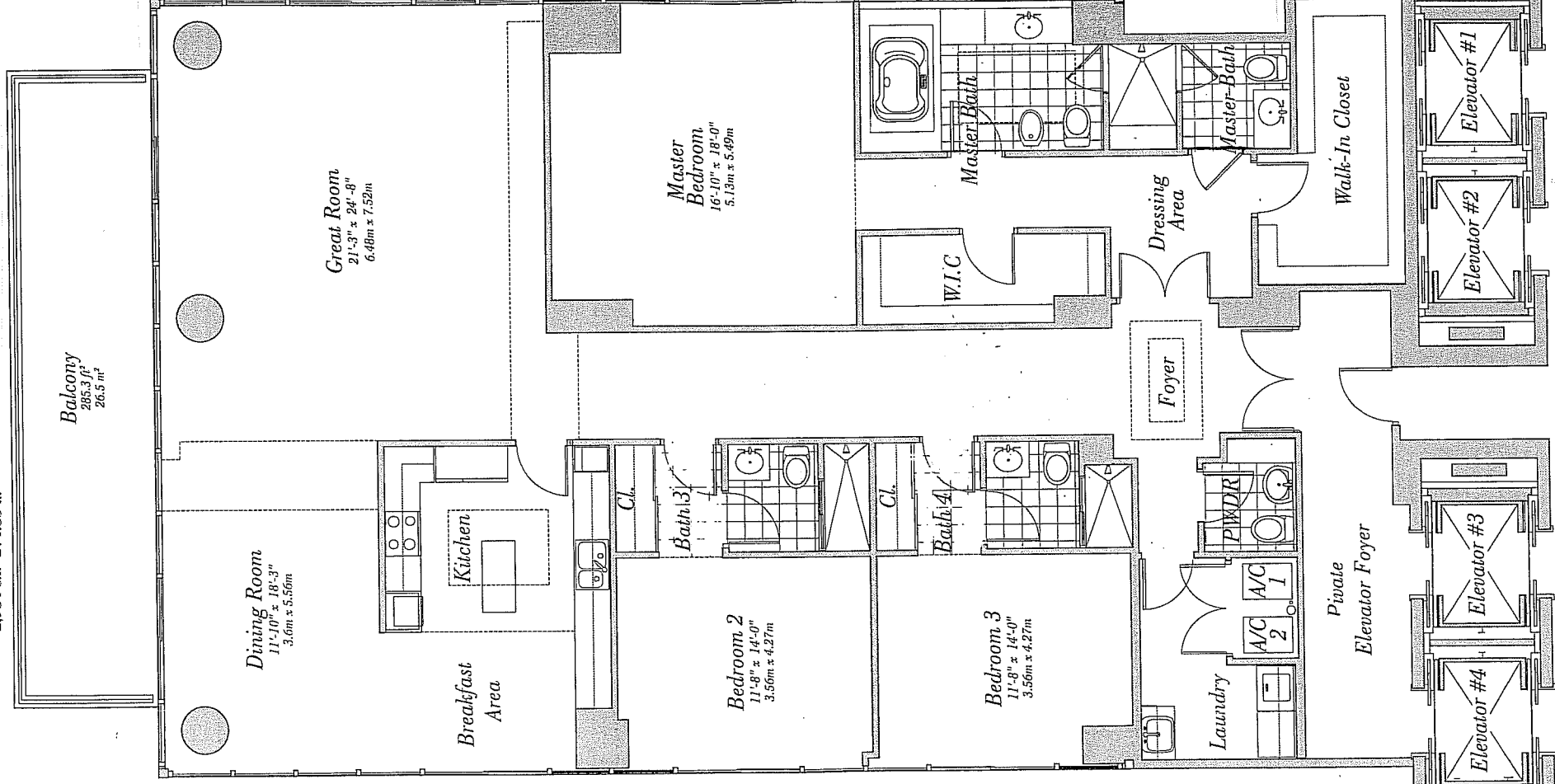


# Residence 18

Floors 31-39

3 Bedroom, 4 Bath, Powder Room  
2,954 s.f. 274.53 m<sup>2</sup>



## Residence Features:

- 10' ceilings
- Frame, curved balconies with glass railings
- Floor-to-ceiling glass doors to balconies with tempered, tinted glass designed to meet hurricane standards of the South Florida Building code.
- Master Bedroom
  - Imported marble flooring in wet areas and shower
  - Kohler fixtures
  - Whirlpool tub with waterfall spout
  - European bathroom vanity cabinets with high-gloss finish
  - Seamless glass shower doors
  - Full length mirror
- Second Bathroom
  - Imported marble flooring in wet areas and shower
  - Imported marble top and backsplash
  - European bathroom vanity cabinets with high-gloss finish
  - Glass enclosure for shower stalls
- Powder Room
  - Kohler fixtures
- Kitchen
  - Custom, imported European cabinetry
  - Granite countertop and glass backsplash
  - Under-counter lighting
  - Variable speed, recirculating range hood
  - Sub-zero 48" built-in refrigerator-freezer
  - Multiple built-in ovens
  - Multiple electric conventional ovens
  - Wide integrated dishwasher
  - Wine cooler with pull-out door
  - Wine cooler in select cabinet
  - Single-lever faucet with pull-out spray
- Laundry
  - Maytag Neptune front-load washer
  - Maytag Neptune front load electric dryer
- Pre-wiring for multiple telephone lines
- Pre-wiring for security system
- Pre-wiring for cable TV
- 8-ft solid-core wood entry doors
- Solid-core wood interior doors